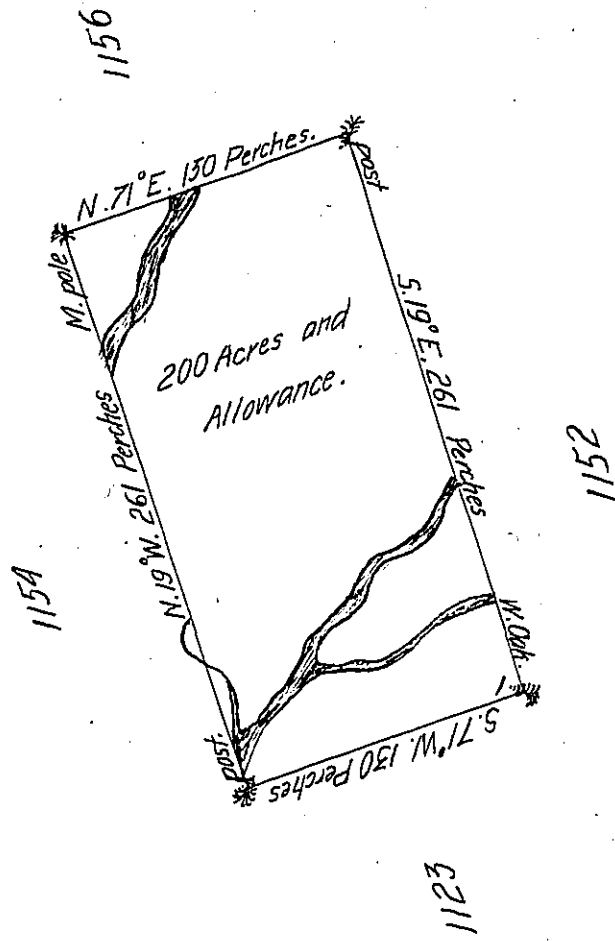


FORM No. 1. DONATION-LAND, in DISTRICT No. 6.

Lot, No. MCLIII.



In Pursuance of an Act of General Assembly of the State of Pennsylvania, passed the twenty-fourth Day of February, 1785, entitled, 'An Act for directing the Mode of distributing the Donation-Lands promised to the Troops by this Commonwealth,' and by Order of the Surveyor-General, with the Approbation of the Honourable the Executive-Council, I have surveyed, on the fifth Day of November 1785, the above described Tract of Two hundred Acres of Land, and Allowance of Six per Cent for Roads, &c. No. 1152 situate in District No. 6, on the West Side of the Allegheny River, in the County of Westmoreland.

John Lukens, Esq.

Ja: Chrystie Deputy

Surveyor-General.

Surveyor.

IN TESTIMONY that the above is a copy of the original remaining on file in the Department of Internal Affairs of Pennsylvania, made conformably to an Act of Assembly approved the 16th day of February, 1833, I have hereunto set my Hand and caused the Seal of said Department to be affixed at Harrisburg, this Seventeenth day of October 1906.

*Loac R. Brown*  
 Secretary of Internal Affairs.